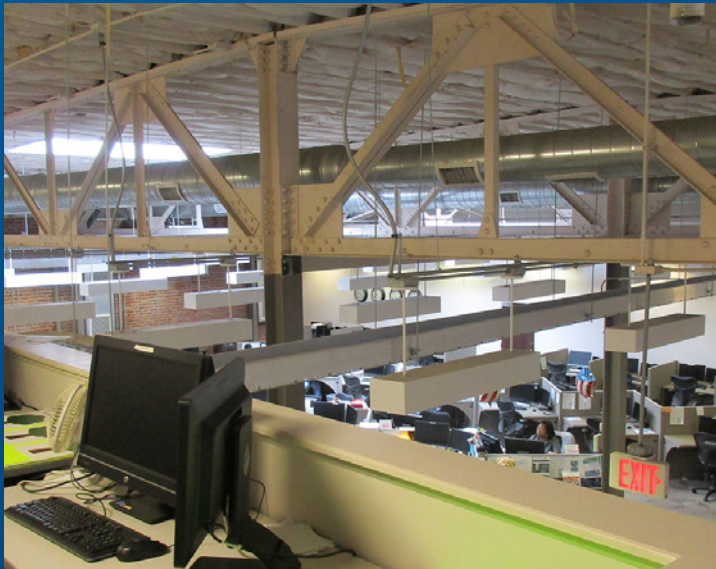
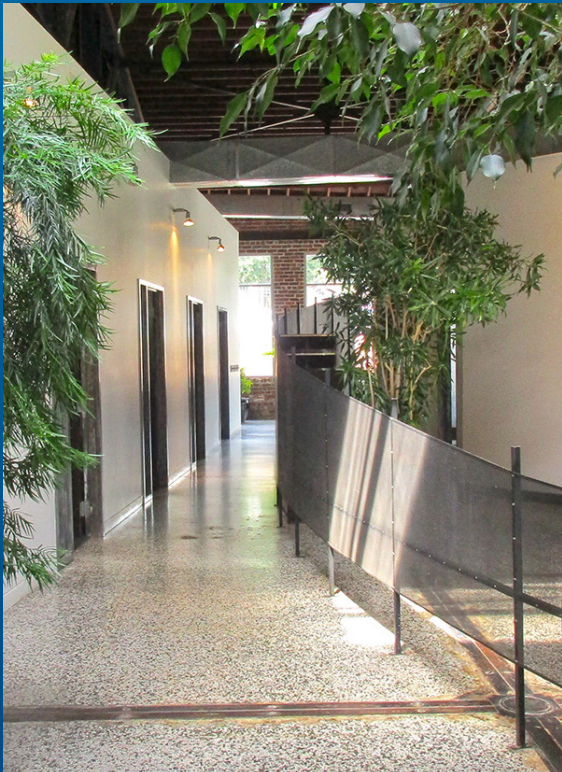


> 2215 Harney Street
CORPORATE COOL IN DOWNTOWN OMAHA

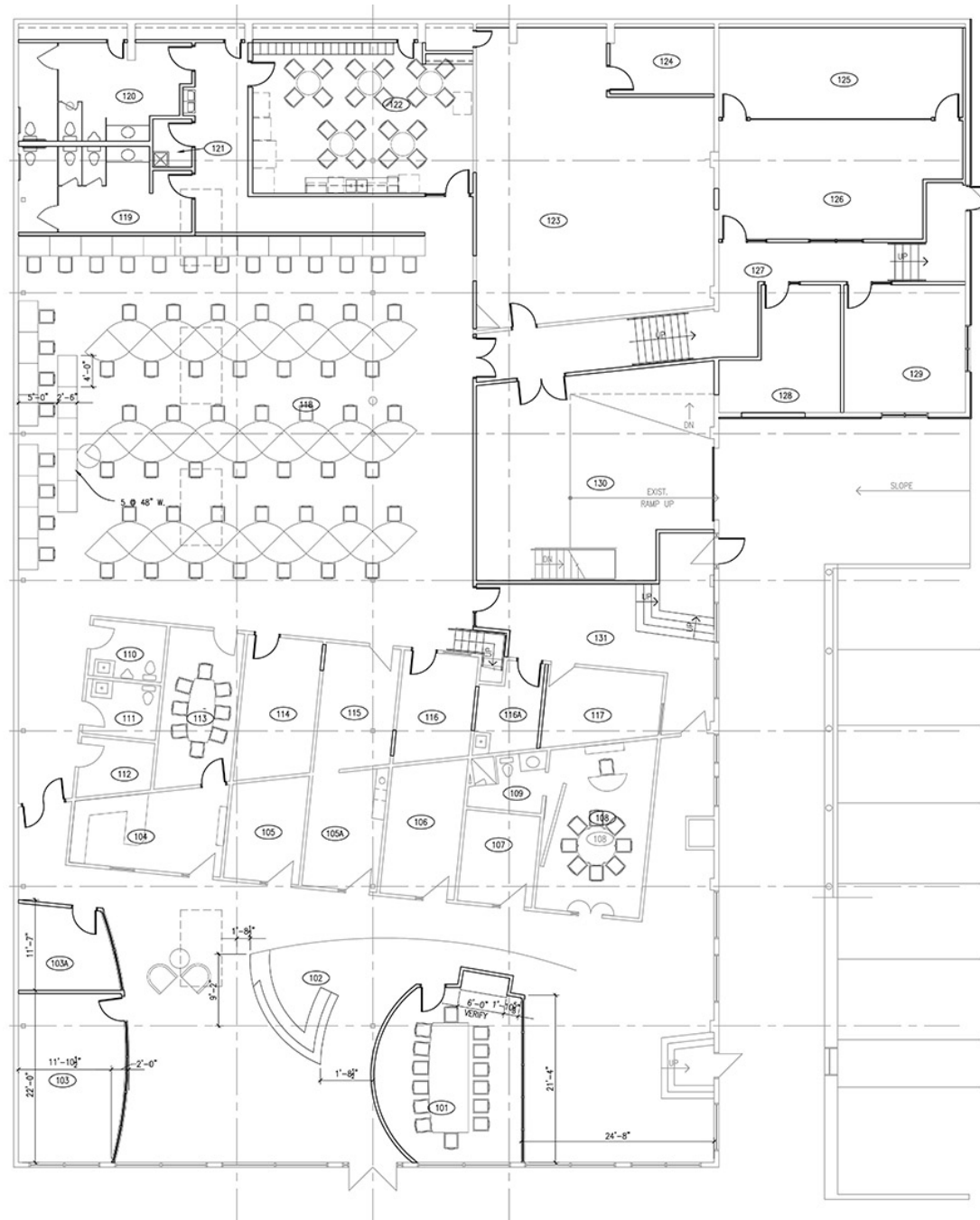


Accelerating success.



› Characteristics That Stand Out

UNIQUE FLOOR PLAN



BUILDING CHARACTERISTICS

- The 2215 Harney Street Building is a spectacular office building located in Downtown Omaha, just one minute from I-480
- 12,000 to 16,000 square feet of first floor and loft office space with an additional partial basement of approximately 1,500 square feet (subdivision options are available down to 6,000 square feet)
- Building features generous and coveted parking, abundant power, redundant fiber-optics and back-up generator
- Originally constructed in 1926 and remodeled into an architectural award winning contemporary office
- Building offers an endless combination of high-end corporate office use options

